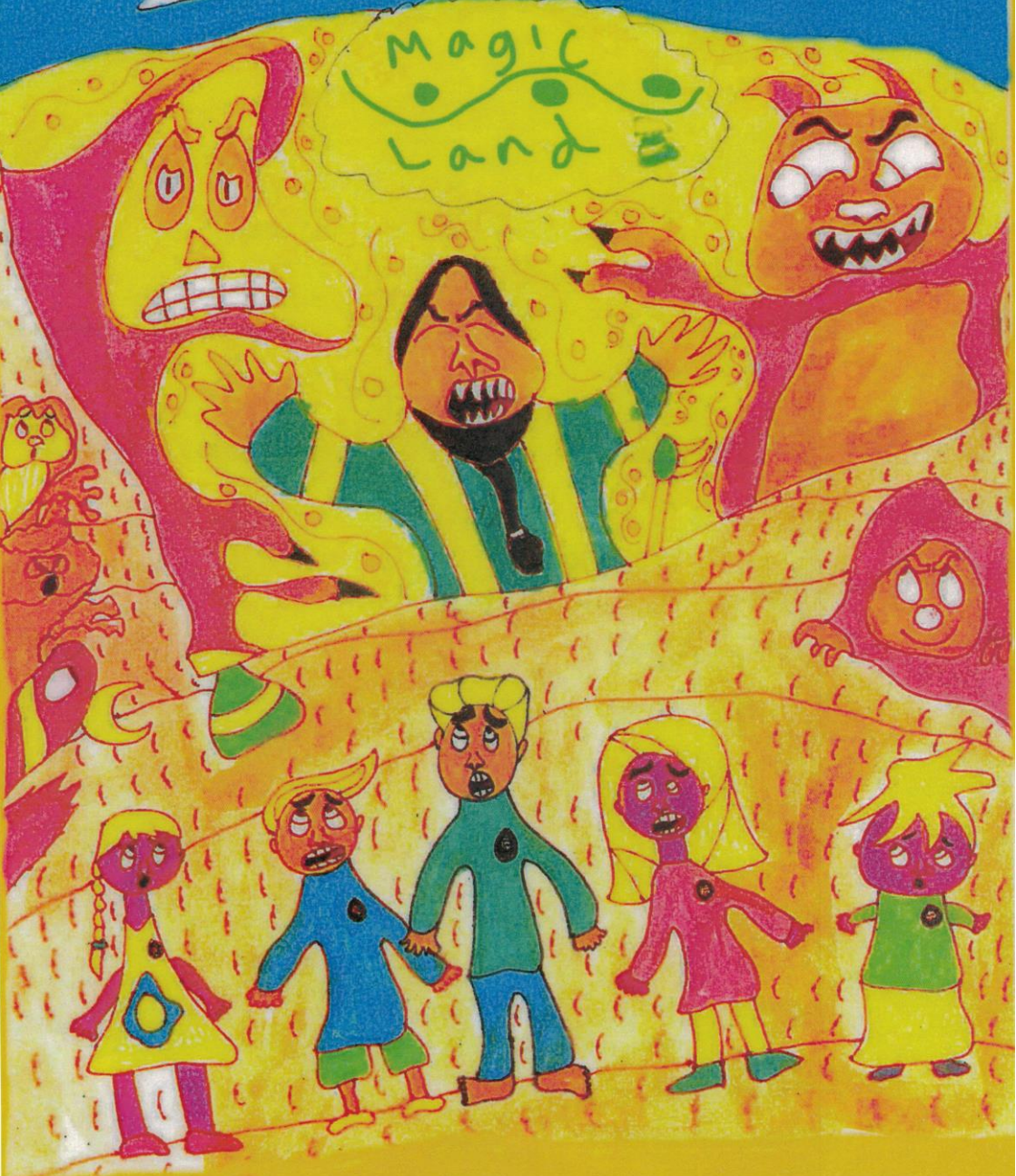


Magic
Land



MAGIC LAND

by
Corneille Noeli



Published by and available from
www.theendlessbookcase.com

eBook Edition

**Available in multiple e-book formats. Kindle version available from
Amazon.**

The Endless Bookcase Ltd
71 Castle Road, St Albans, Hertfordshire, England, UK, AL1 5DQ

Copyright Corneille Noeli © 2016
All rights reserved

ISBN: 978-1-908941-61-9

ACKNOWLEDGEMENTS

I would like to thank the following people:

- **My primary school teachers at Commonswood in Welwyn Garden City for their encouragement with my drawings.**
- **Stuart Jones, one of my Art & Design teachers at Oaklands College Smallford, for helping me improve on my drawing skills and teaching me techniques to make backgrounds look 3 dimensional.**
- **Richard Mitchell, my tutor in Art & Design Level 3 in Interactive Media for helping me plan out my future in Art.**
- **Phil Heath, my tutor at Oaklands College, for his tremendous support and guidance, in particular with my final year exhibition work and career prospects.**
- **Violet Blye, Frances McShane, Laura Ansell and the rest of the Learning Support Team at Oaklands College for all their assistance throughout my time at college.**

I also thank all my family for being there when it matters.

ABOUT THE AUTHOR



"I draw and write children's story boards using a variety of art & design tools such as water colours, highlighters, pencils and fineliner pens. My storylines mostly come from my childhood memories and experience. As a young boy growing up, I used to watch a lot of cartoons and enjoyed reading funny books from my local library.

From early on in primary school, my interest in children's art books and colourful drawings never stopped growing. With my teachers' help and encouragement, I started drawing and creating my own stories using a storyboard format.

At the age of 11, I compiled my first structured storyboard on a duck character which was later shown to the school assembly. What was a fun thing back then steadily gathered pace. With the applause I received from the school, I began to focus more and more on art and drew even more. This first attempt has stayed with me all along. The duck is now present in all my works in the shape of a logo with my initials (CN studios) inside it.

As a child, I used to draw a lot of boxes in a grid and labelled them accordingly from 1 to tens using each square box to represent a scene. As I moved to secondary school later, despite the focus on academic skills, I continued with my drawings in my spare time at home. One of my favourite lessons was drama. I particularly enjoyed any performance which depicted children's scenes or character plays. Some of these characters are also present in my drawings today.

Moving on to do Art & Design at Oaklands College was a natural and logical step. I had a fantastic team of lecturers and teachers who helped me refine and master drawing techniques.

I chose a children's audience for my first major assignment at level 3 which landed me my first Merit for the course. Looking back, I think I only expressed what has always been my passion: to tell a simple children's story with pencils. There is nothing that drives me more...

My drawing style is simple, abstract and very expressive on my characters' faces. I also use bright colours. This is something that underpins my way of drawing. Most of my work tries to catch children's imagination with a message of someone special always being there for them, friends and family.

As a first storybook to be published, I chose the Magic Land. It is a fun story of 3 school friends with an enigma to solve. I hope the public but mostly children enjoy!"

Corneille Noeli

MAGIC LAND

CN Studios

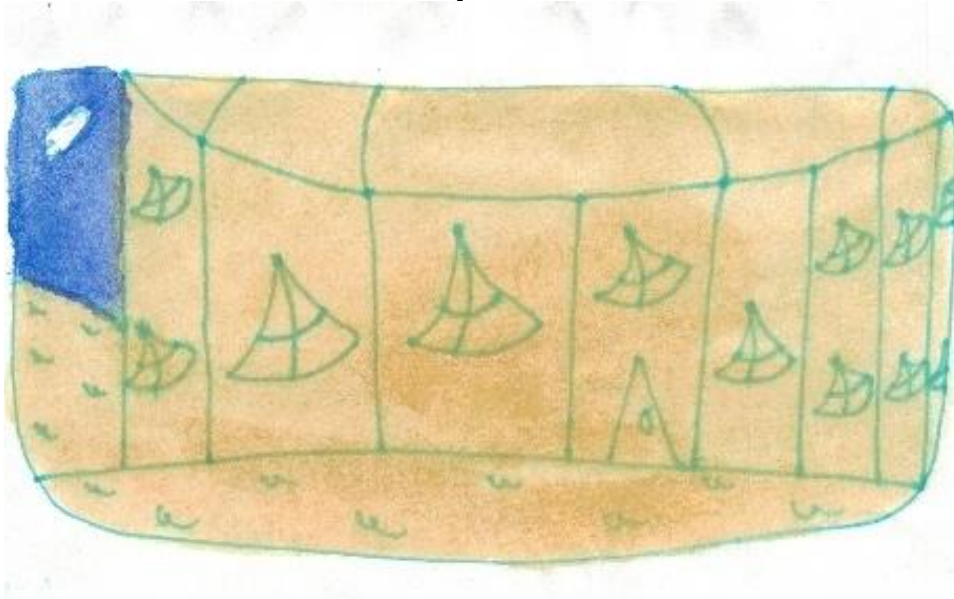


Magic Land



The scene is set in a secluded village in the middle of a desert where houses are scattered in the sandy hills of Shanba. It is a sunny day with blue sky.

Magic Land



At the entrance of Shanba Prince school are triangular shaped doors and windows carved into the sandy walls, typical of the buildings in this area.

Magic Land



Today Mrs Goodwin is telling the class a story about a magical lamp mysteriously known to swallow people and animals. Kobe and his friends are hooked.

Magic Land



She points to the magical lamp on the board. It is gold with green stripes.

Magic Land



Kobe's eyes are wide open as he listens. He is transfixed by the story.

Magic Land



Standing in the distance is a large fortress casting terrifying shadows on the land. It is painted in forest-like green with spiky roof tops.

Magic Land



Tugging on the greasy tail end of his long black beard is the slave master, Barooda. He is tall with a vicious frown. He contemplates what he will do to his latest victim standing nearby.